



# GAT MONTHLY MEMBERSHIP PROGRESS REPORT

Results as of: 3/31/2022

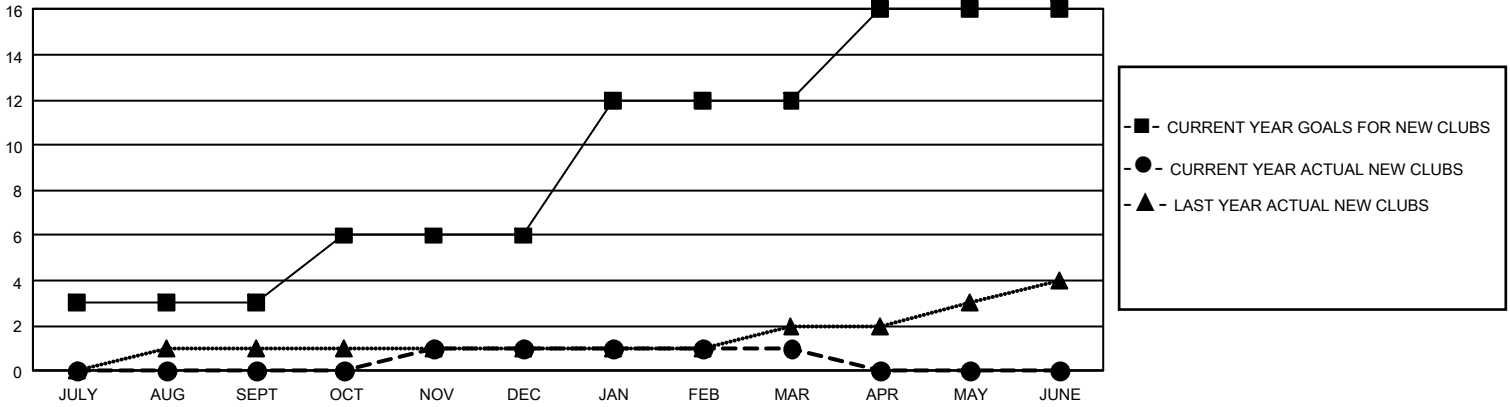
## GMT Constitutional Area 1, Group K

REPORT DOES NOT INCLUDE CLUBS IN UNDISTRICTED AREAS.

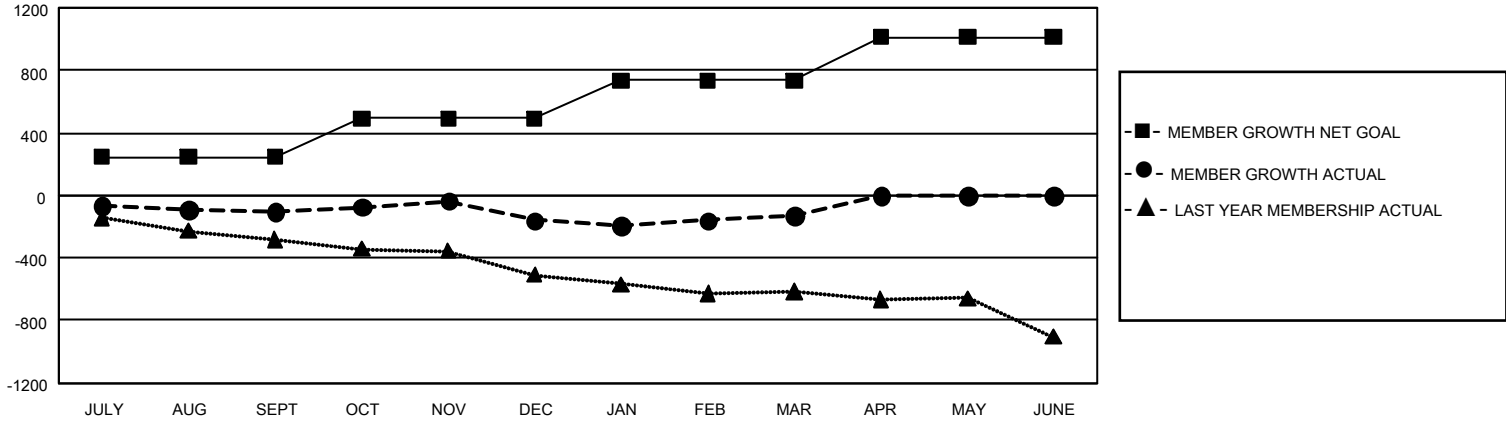
Clubs			
RESULTS FOR 2021-2022			
QUARTER	NEW CLUB GOAL	NEW CLUBS	DROPPED CLUBS
JULY/AUG/SEPT	9	0	4
OCT/NOV/DEC	9	1	3
JAN/FEB/MAR	18	0	0
APR/MAY/JUNE	12	0	0

Members			
RESULTS FOR 2021-2022			
QUARTER	MEMBER GROWTH NET GOAL	MEMBER GROWTH ACTUAL	DROPPED MEMBERS ACTUAL (including transfers)
JULY/AUG/SEPT	247	303	369
OCT/NOV/DEC	244	501	526
JAN/FEB/MAR	245	418	311
APR/MAY/JUNE	277	0	0

GOALS AND ACTUAL NEW CLUBS CUMULATIVE



GOALS AND ACTUAL MEMBERS CUMULATIVE



DROPPED CLUBS: 7	
<b>DROPPED MEMBERS</b>	
DECEASED	197
CLUB CANCELLED	46
OTHER	963
<b>TOTAL</b>	<b>1,206</b>

318 CLUBS OF 586 ADDED 1 OR MORE NEW MEMBERS

[CLICK HERE FOR CUMULATIVE MEMBERSHIP DATA](#)

GENDER DISTRIBUTION	
MALE	10,849 (62.70%)
FEMALE	6,451 (37.28%)
NON BINARY	0 (0.00%)
PREFER NOT TO ANSWER	3 (0.02%)
TOTAL FAMILY UNIT MEMBERS	3,428
FAMILY MEMBERS PAYING HALF DUES	1,759